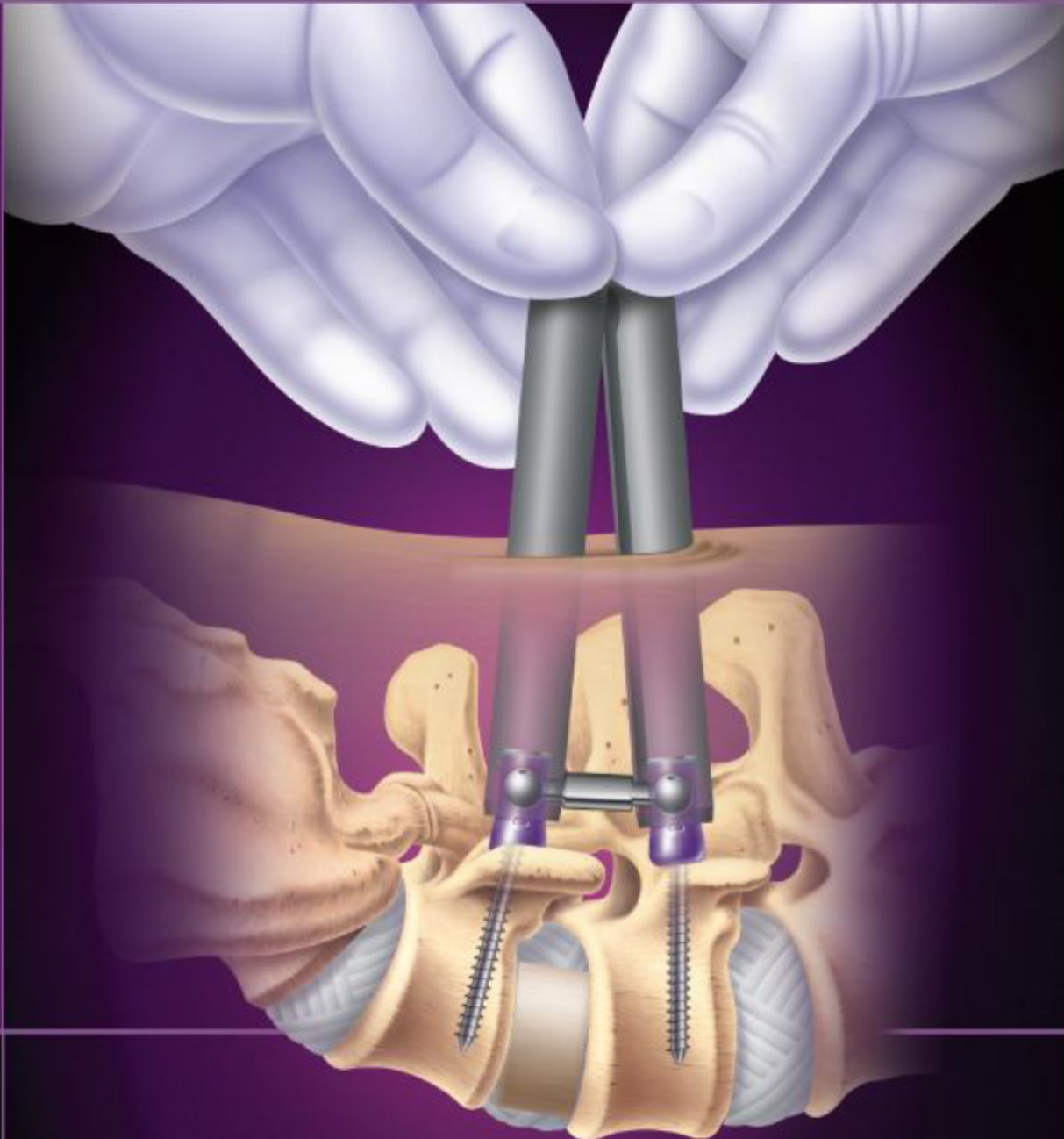


Minimally Disruptive Posterior Fixation

S U R G I C A L P R E S E N T A T I O N



Uniquely
Functional

Impressively
Simple

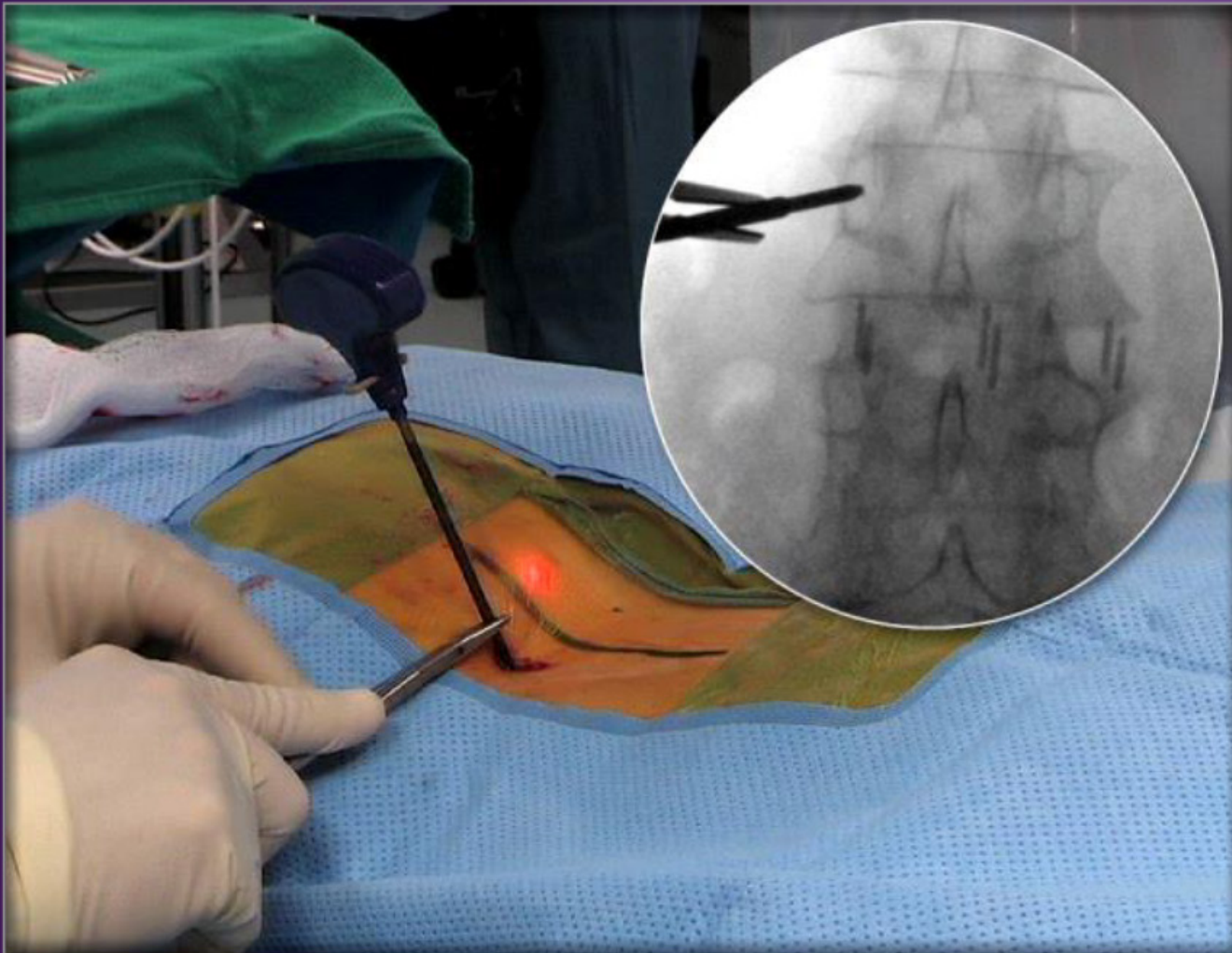


MAXIMUM
ACCESS
SURGICAL
PLATFORM



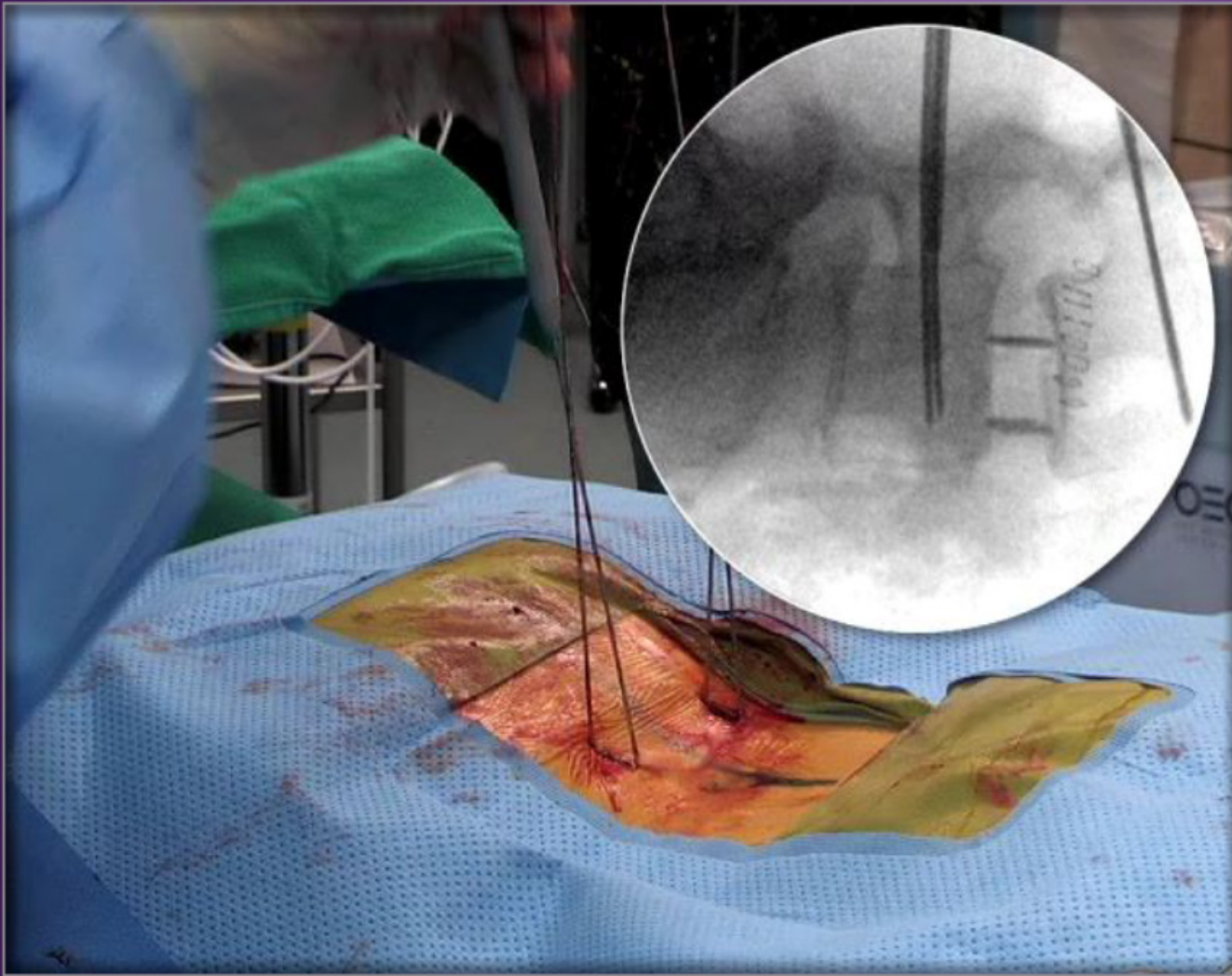


Access Pedicles





Insert Insulators





Tap and Determine Screw Length



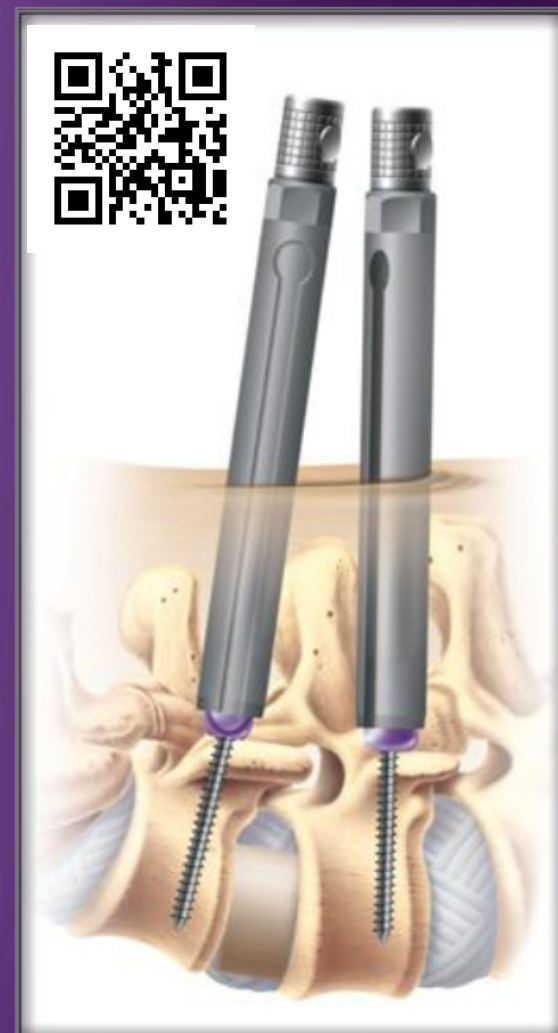


Assemble Screw and DBR™ Guide



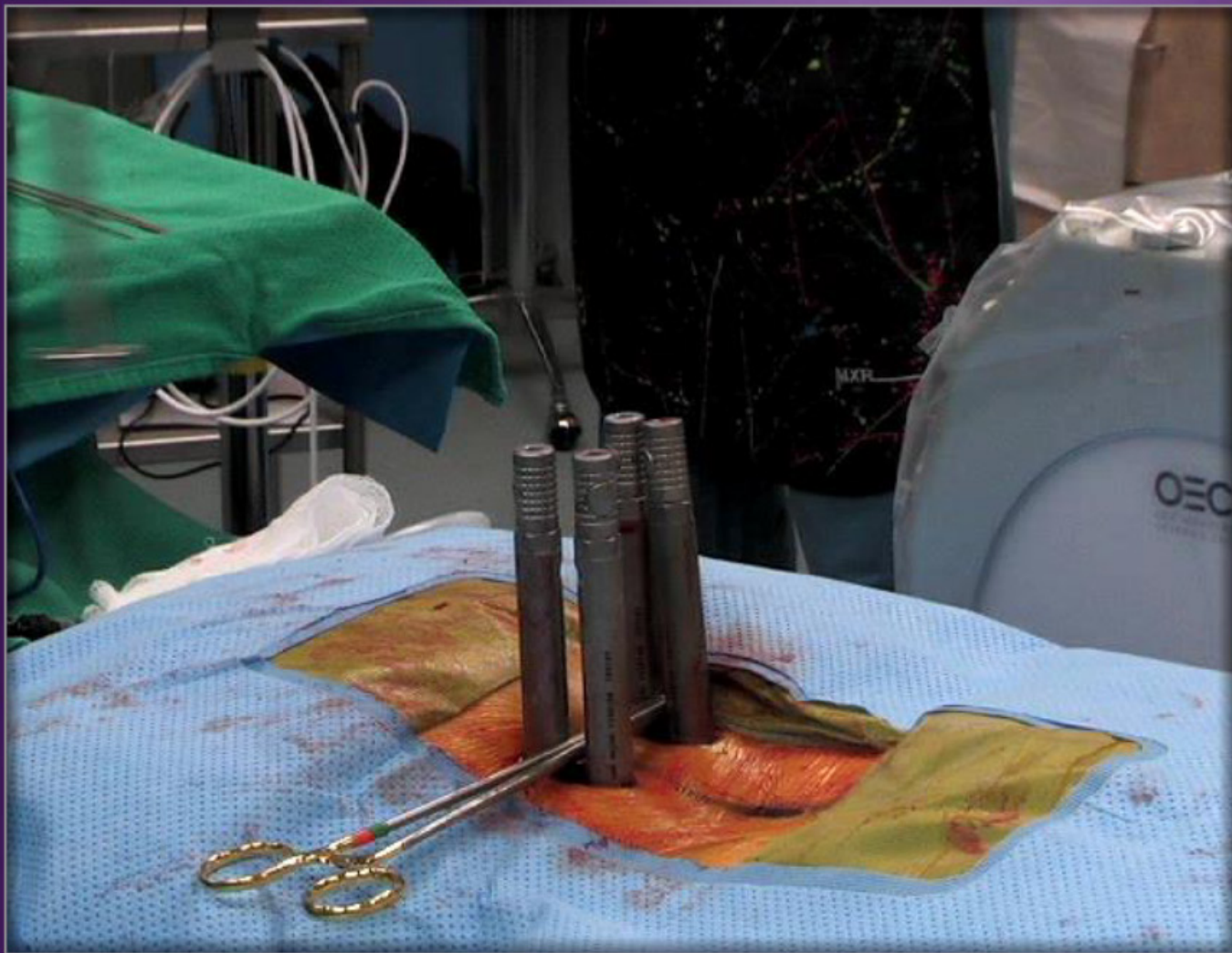


Insert Screws





Determine Rod Length



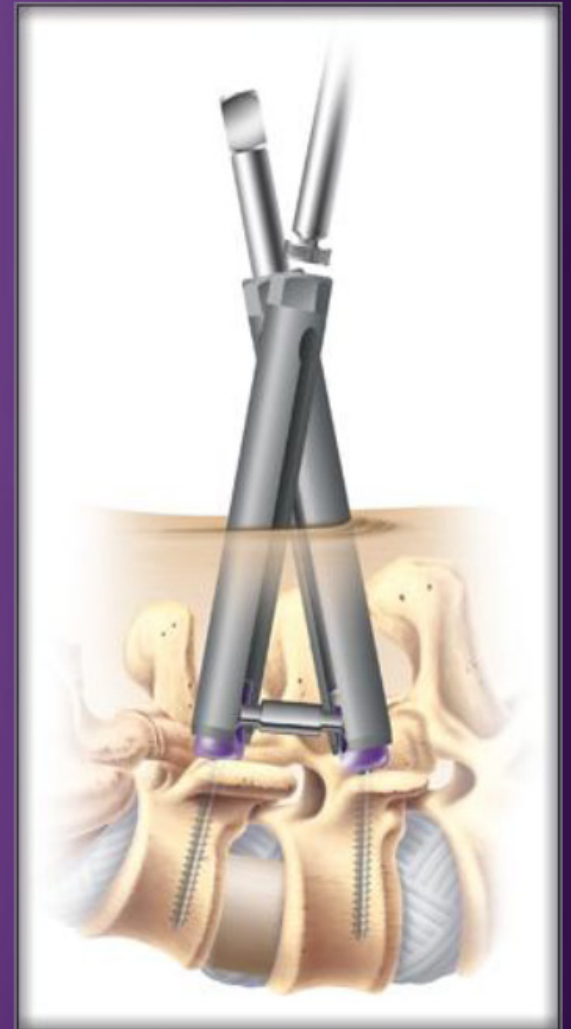


Insert Rod





Insert Lock Screws





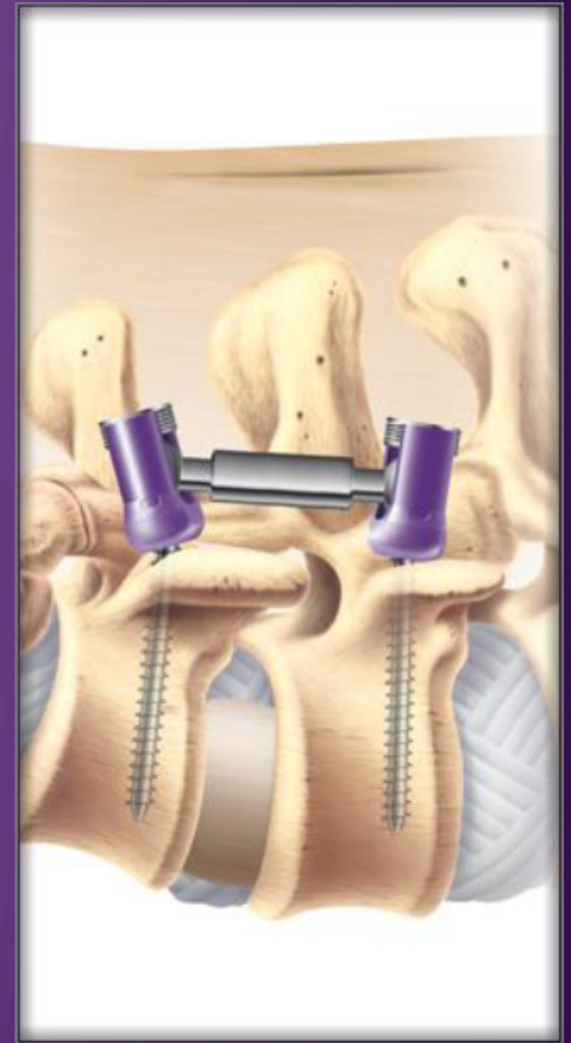
Tighten Inferior Screw

(Initial Compression)



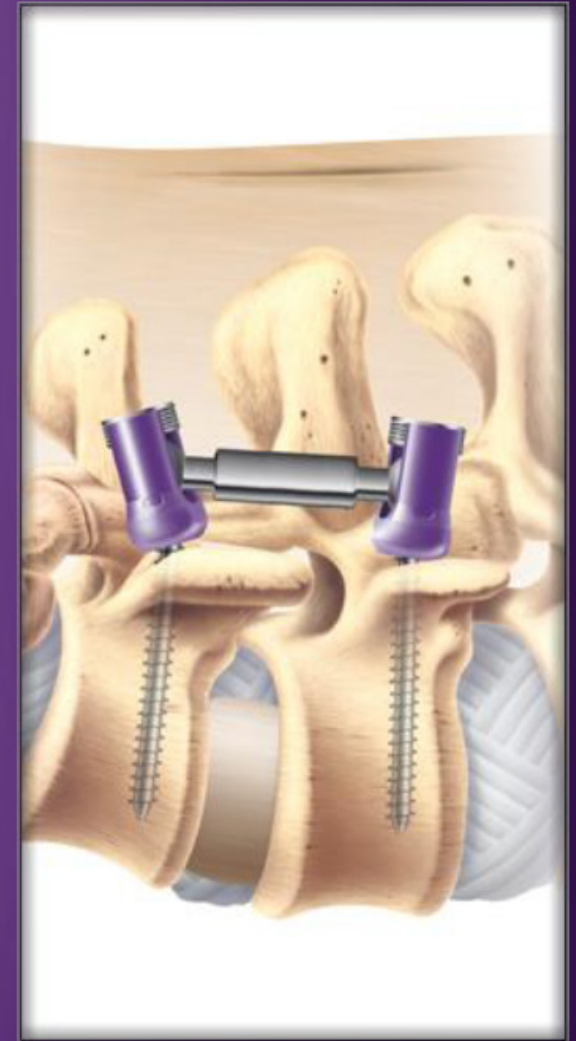
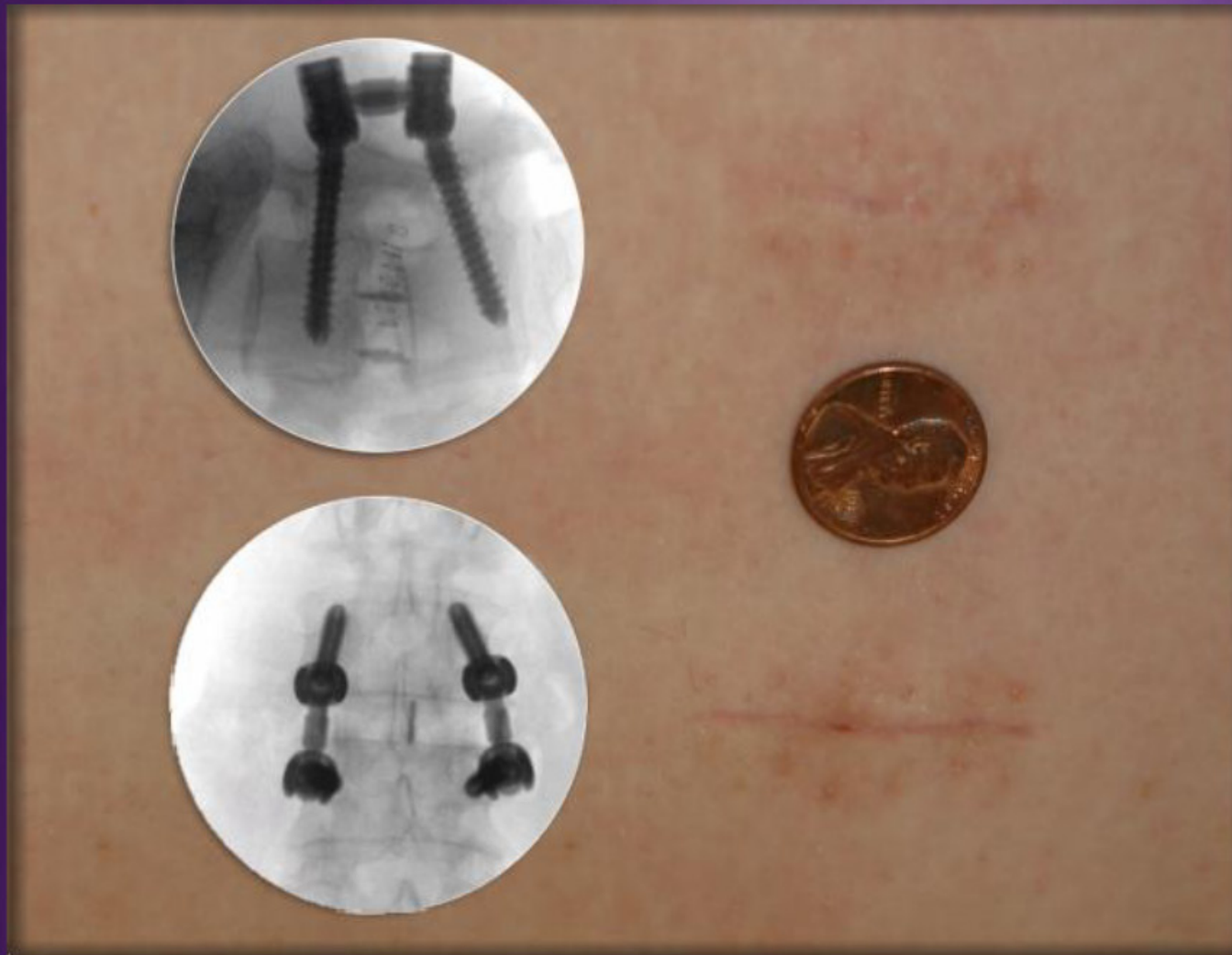


Compression and Final Tighten (Simultaneous Bilateral Compression)






Result





To order or schedule a focused hands-on cadaveric experience in our state-of-the-art MAS™ OR, please contact your NuVasive Sales Consultant or Customer Service Representative today at: 4545 Towne Centre Court, San Diego, CA 92121 • phone: 800-475-9131 fax: 800-475-9134

www.nuvasive.com

© 2006. NuVasive, Inc. All rights reserved.  NuVasive, Creative Spine Technology, MaXcess, NeuroVision, SpheRx, and Triad are federally registered trademarks of NuVasive, Inc. DBR, InStim, and MAS are common law trademarks of NuVasive, Inc. Patent(s) pending. Covered under U.S. Patent No. 6,802,844.

9004277 A.0